



Models of Audiological Service Delivery: The Role of Telepractice

**Colleen Psarros, Louise Hickson,
Caitlin Grenness, Robert Cowan**

The HEARing CRC Member Organisations

Core Members

Australian Hearing HEARING SPECIALISTS FOR 60 YEARS	Cochlear™	MACQUARIE UNIVERSITY UNIVERSITY - SYDNEY	SIEMENS	THE UNIVERSITY OF MELBOURNE
--	-----------	---	---------	-----------------------------

Support Members

Acoustics Pty Ltd	attune™ hearing each moment	audiology australia	The Bionic Ear Institute	the children's hospital at Westmead
Hear and Say Centre for children who are deaf/hearing impaired and their families	hybrid electronics	Murdoch Childrens Research Institute Healthier Kids. Healthier Future.	MURIGEN	
Neuromonics Tinnitus Treatment	Royal Institute for Deaf and Blind Children	The Royal Victorian Eye & Ear Hospital caring in every sense	The Shepherd Centre Giving deaf children a voice	
SCIC	SYDNEY SOUTH WEST AREA HEALTH SERVICE NSW HEALTH	Taralye the oral language centre for deaf children getting deaf kids talking	THE UNIVERSITY OF QUEENSLAND AUSTRALIA	
The University of Sydney	University of Wollongong	vicdeaf Communication is the key	Walter+Eliza Hall Institute of Medical Research	

The Strategic Vision

The HEARing Cooperative Research Centre (CRC) is focused on the twin challenges of:

- more **effective prevention**; and
- **improved remediation** of hearing and communication disability.

Aims

Through research and its use, the HEARing CRC aims to reduce the economic impact of hearing loss by focusing member's expertise on:

- maximising lifelong **hearing retention**
- reducing loss of **productivity** resulting from hearing disability
- increasing **uptake and use** of hearing technology; and
- providing postgraduate and professional **education and training** to support uptake and use of prevention and remediation initiatives.

Audiology Australia's Mission

To provide leadership in science and practice of audiology through advocacy, promotion, education and networking. We enable audiologists to deliver the highest standards of person-centered care.

 Recent position Paper on Audiology Service Delivery

Operationalizing Person-Centred Care

Audiology Australia recommends the adoption of the World Health Organisation International Classification of Functioning Disability & Health (ICF) as a framework for delivery of person-centred audiological care

1. Outline the WHO ICF and its applicability to telepractice
2. Provide some examples of research and telepractice already happening for adults and children with hearing impairment

Why Use the WHO ICF Framework?

- Establishes a framework for service delivery that focuses on the **FUNCTION** of a client in the context of their everyday lives
- Allows for the development of person-centered management plans
- Provides a common language across professions and policy makers for the description of function (e.g., for the National Disability Insurance Scheme)

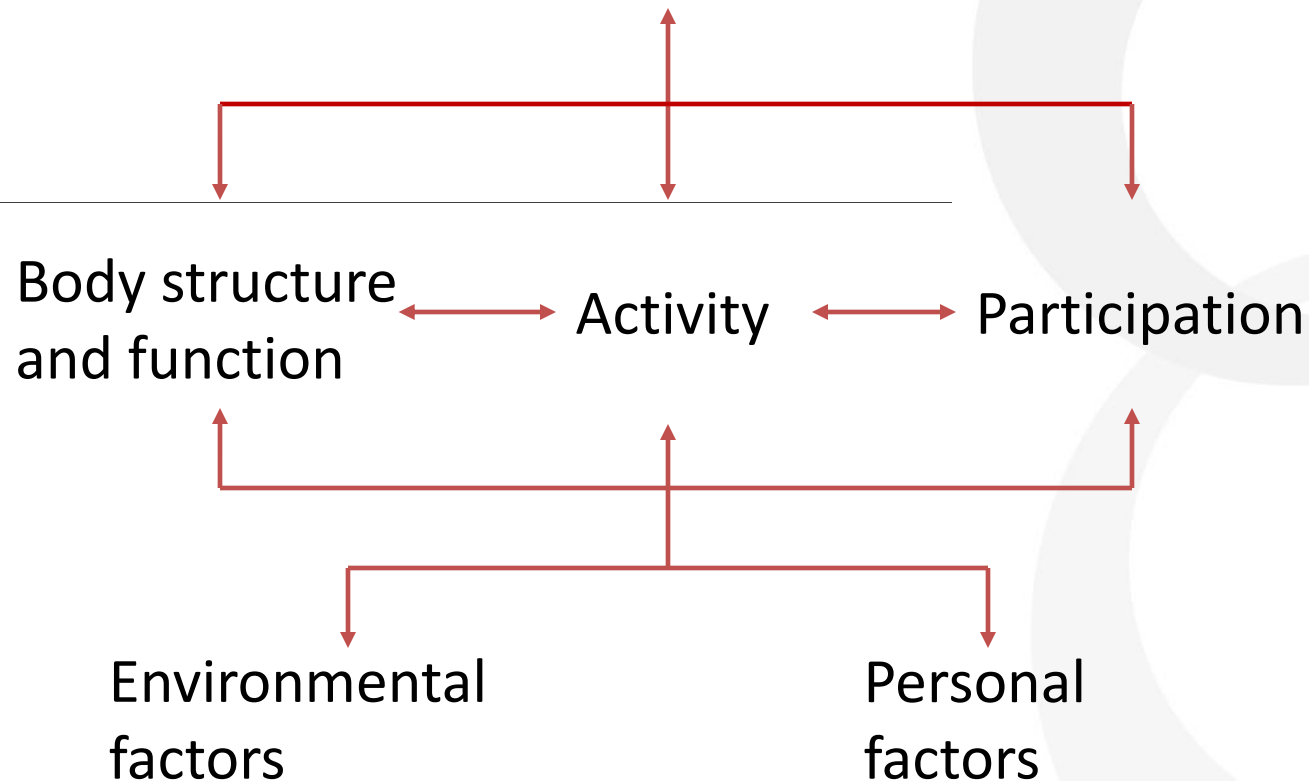


International Classification of Functioning, Disability and Health

ICF

Approved by the World Health Assembly in May 2001

Health condition

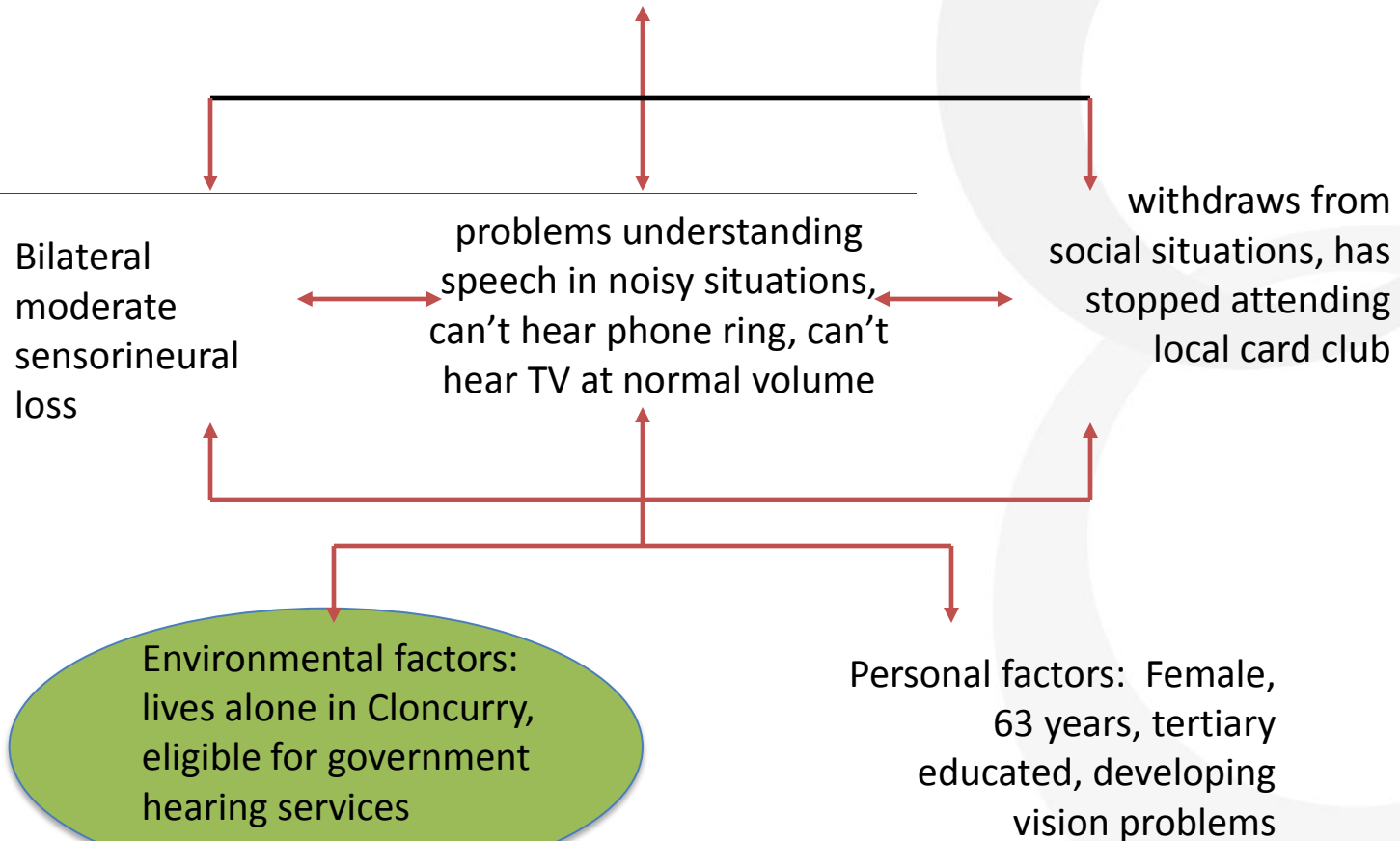


- Individual
 - immediate personal environment e.g. home, school, workplace
- Services and systems
 - formal and informal structures in the community and overarching systems that set the pattern e.g. organisations and services related to the work environment, health care systems, laws, informal rules

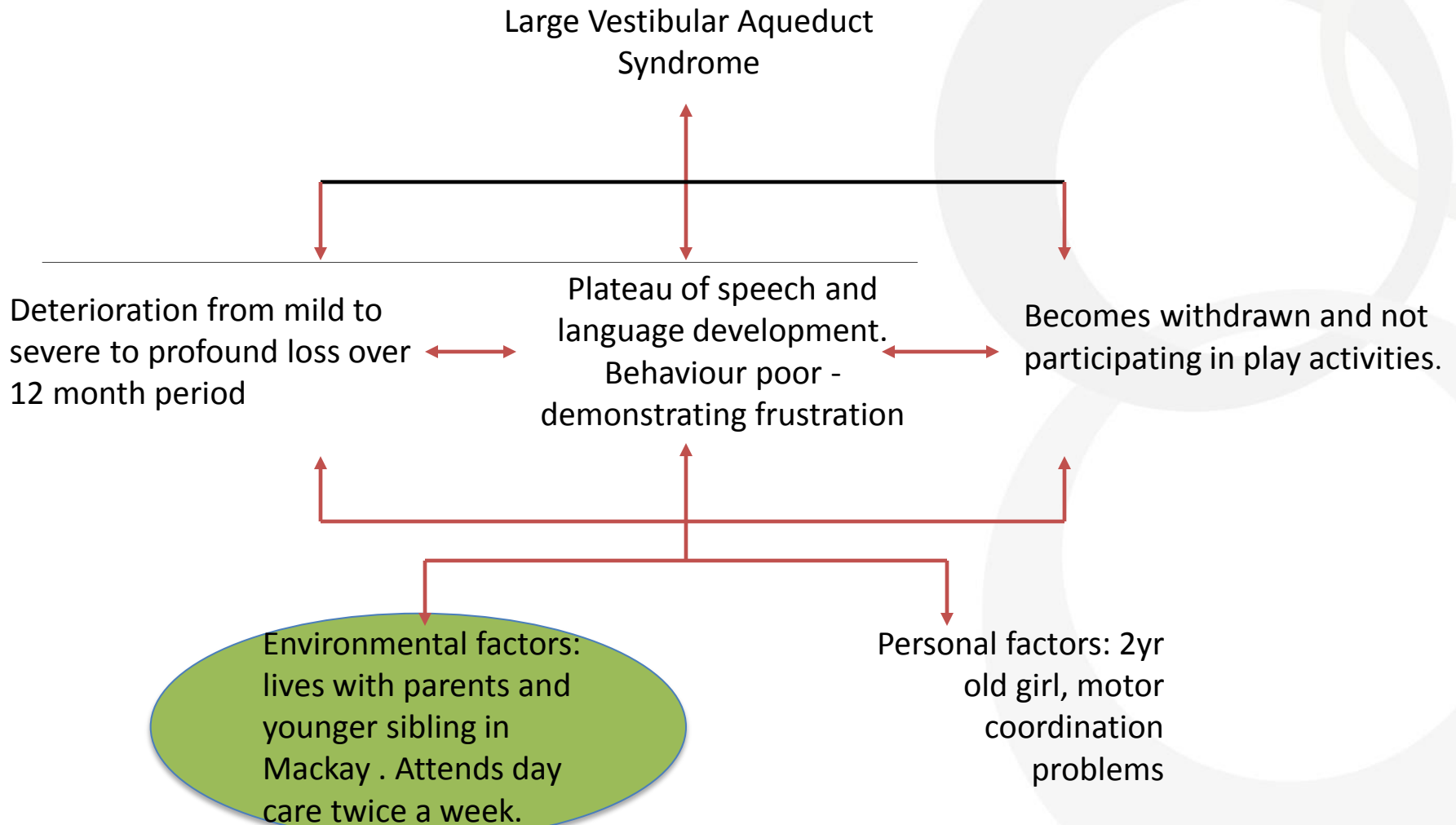
Telepractice

Audiology Example: Cathy Jones

Ageing

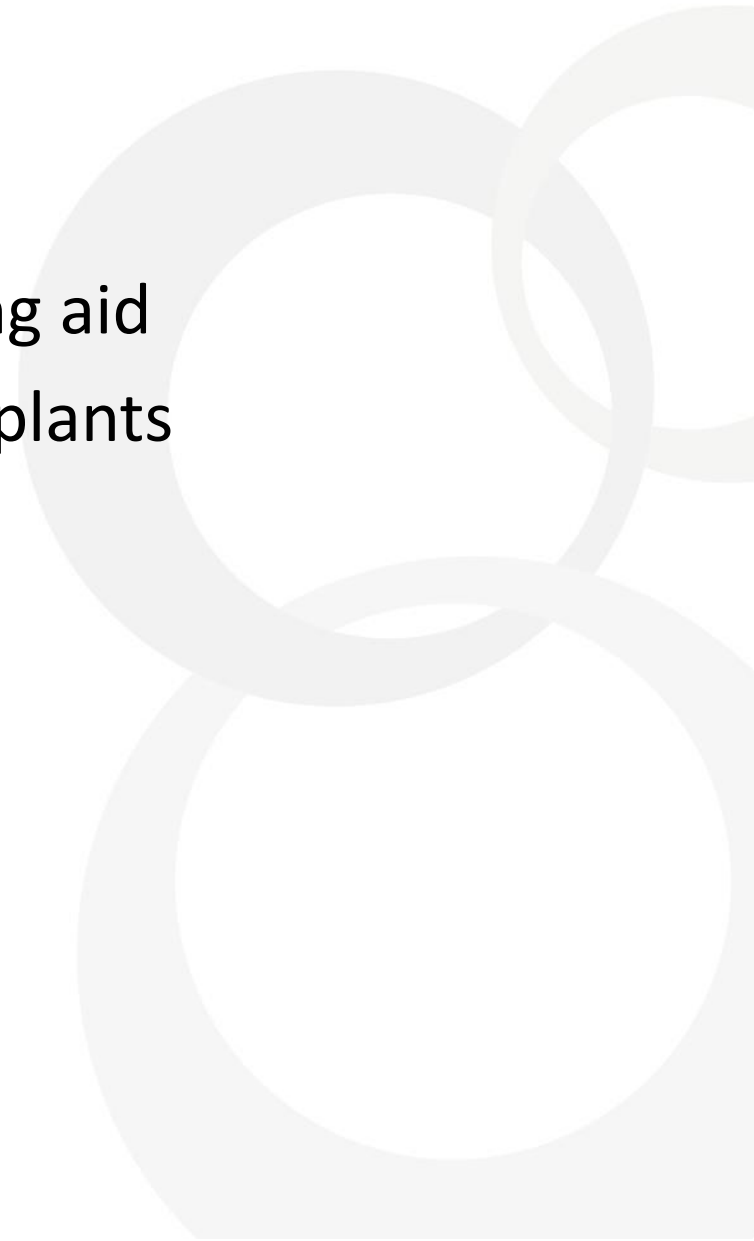


Audiology Example: Anne Smith



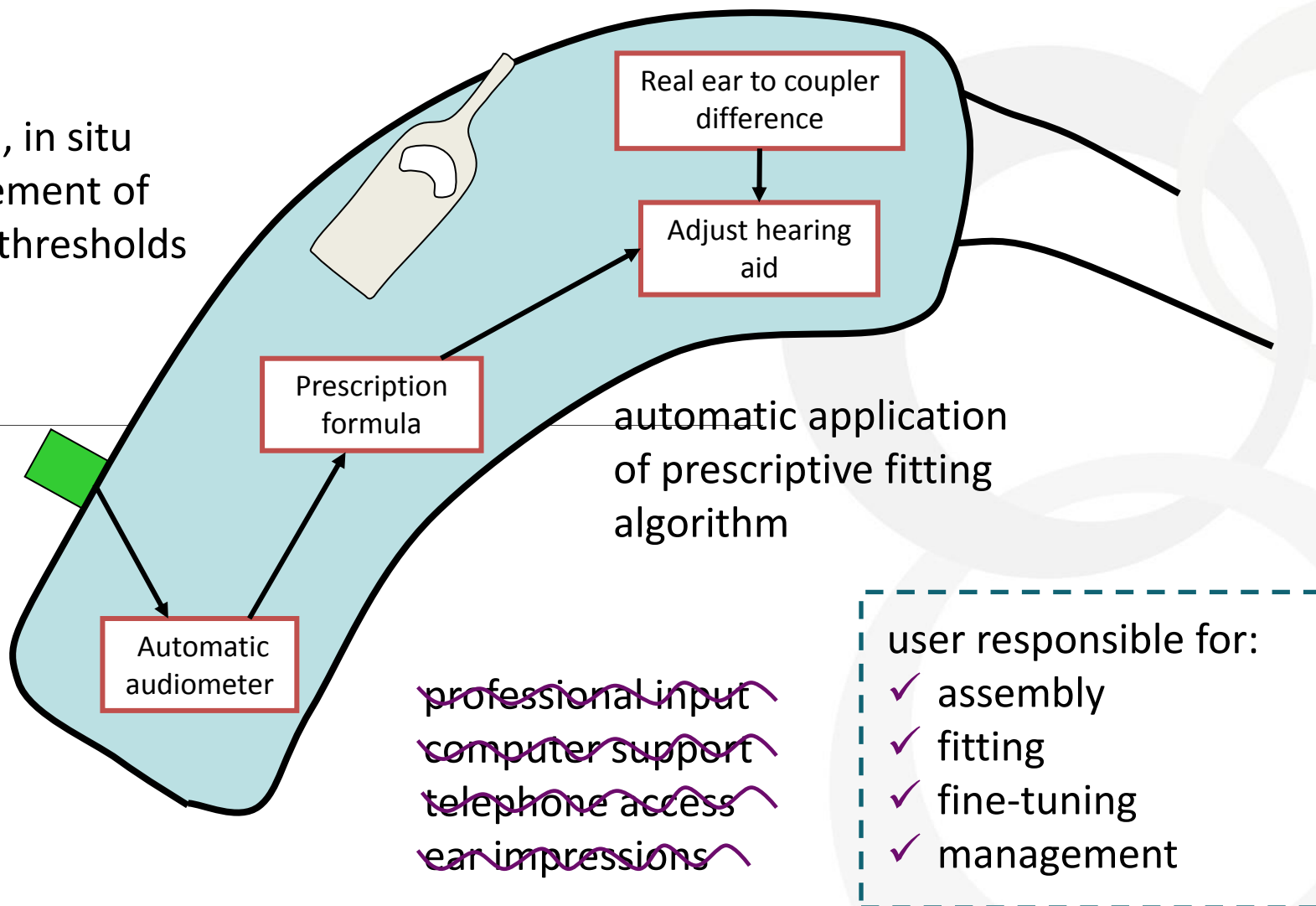
2. Examples of Telepractice Studies in Audiology

- Evaluation of a self-fitting hearing aid
 - Remote mapping of cochlear implants
-



The Self-Fitting Hearing Aid

onboard, in situ
measurement of
hearing thresholds



Remote Cochlear Implant Mapping

- 5 Families trained face to face for newly implanted children
- 10 families transferred who were familiar with the mapping procedure and use of videoconferencing
- All post switch on with minimum of 3 weeks implant use
- All but 1 involved in telepractice for habilitation
- Software loaded on cloud computer
- Use of remote access software to control computer on remote end

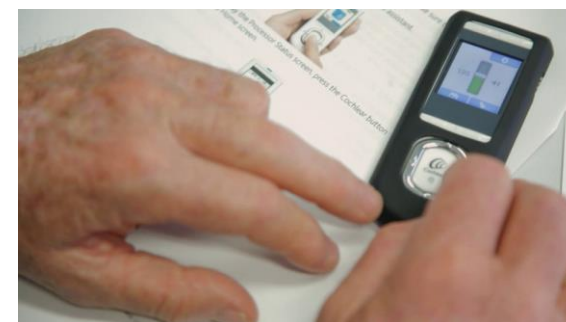


Examples of Equipment


**eHAB® System (NeoRehab Pty Ltd,
Brisbane, Australia)**
www.neorehab.com




Cochlear self-mapping device



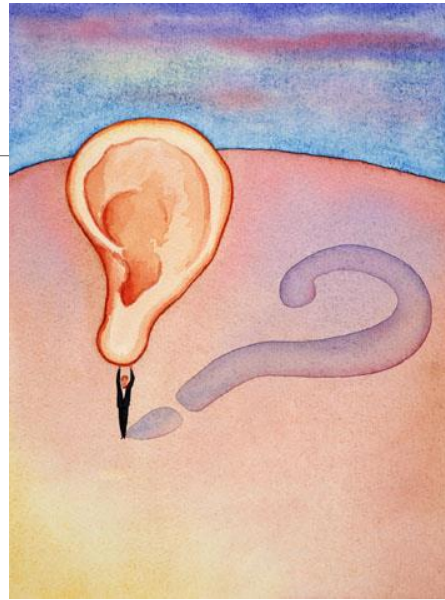
Take-Home Message



Telepractice will allow
the delivery of
person-centred
hearing health care



Any Questions?



-
- My contact details: l.hickson@uq.edu.au